

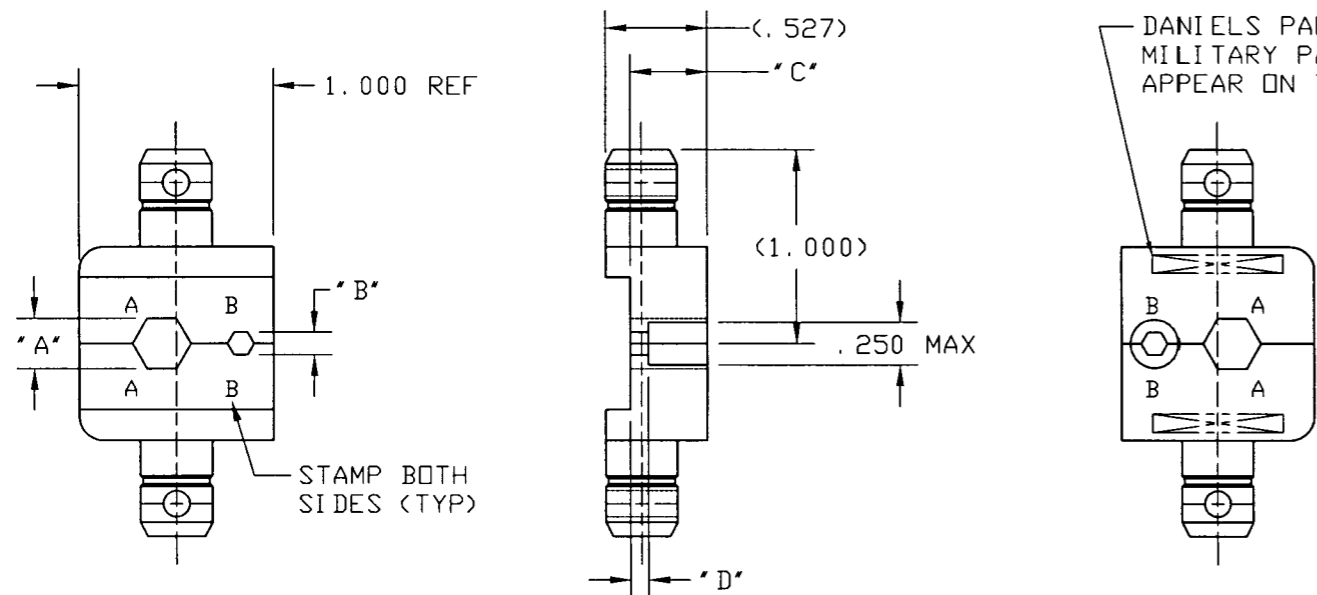
## product details

---



*Please note: Images are for reference only*

<b>Amphenol Part Number:</b>	227-1221-25
<b>Description:</b>	TWINHEX Crimp Tool Die Set
<b>Product Series:</b>	
<b>Product Type:</b>	<a href="#">Tools</a>
<b>RoHS Certificate:</b>	Out of Scope
<b>More Information:</b>	<a href="#">Customer Drawing</a> <a href="#">Distributor Inventory</a>



227-1221-X		REVISIONS			
DRAWING NO.	REV	DESCRIPTION	DATE	ECO	APPR
THIRD ANGLE PROJ.		OFFICIAL ENG. RELEASE TO MFG.	5/31/73	19829	
	AA	REDRAWN WAS 'C' SIZE; ADD DASH -63 & NOTE 11	8/4/95	40734	CPM/DR
	AB	ADD DASH -100	10/25/96	41606	CPM/JJD
	AC	DASH 100, DIM 'A' WAS .263		43282	CPM/

AMPHENOL PART No.	DANIELS PART No.	DIMENSIONS				CABLE TYPE: RG-( )/U	CONNECTOR SERIES
		±.003 'A'	±.003 'B'	±.010 'C'	±.010 'D'		
227-1221-09	Y204P	.178	.068	.400	.093	122, 180, 195, 21-597, 174, 179, 187, 188	BNC, TNC-CAV. A&B, SMA-CAV. A
-11	Y205P	.213	.068	.400	.093	55, 58, 141, 142, 223, 303, 400	BNC, TNC-CAV. A&B, UHF&SMA-CAV. A
-13	Y206P	.255	.068	.400	.093	59, 62, 140, 210	BNC, TNC-CAV. A&B, UHF-CAV. A
-15	Y207P	.263	.068	.400	.093	71	BNC, TNC-CAV. A & B
-25	Y110	.429	.100	.400	.120	8, 9, 11, 87A, 149, 165, 213, 214, 216, 225, 393	N-CAV. A&B
-29	Y109P	.324	.100	.400	.120	5, 6, 21, 143, 212, 222, 304	N-CAV. A&B
-23	Y145	.384		.400		8, 9, 11, 149, 213	UHF
-57	Y209P	.213	.100	.400	.120	55, 58, 141, 142, 223, 303, 400	N-CAV. A&B
-59	Y208P	.255	.100	.400	.120	59, 62, 140, 210	N-CAV. A&B
-03	Y196	.128	.105	.325		174, 179B, 186A, 187A, 316	SMA
-90		.312 <sup>+.003</sup> <sub>-.002</sub>		.400		3/16 DIA CABLE	SMA, TNC, N
-35	Y137	.324	.128	.400	.120	SPECIAL NORTHROP NA1-1253	TNC, N
-27	Y151	.532		.400		SPECIAL NORTHROP NA1-1253	TNC, N
-37	Y138	.314	.151	.400		GALILEO 3000-(X)S FIBER OPTIC	905 & 906 SERIES
-45	Y143	.231	.218	.400		VARIOUS FIBER OPTIC CABLE	905 & 906 SERIES
-39	Y139	.309	.160	.400		VARIOUS FIBER OPTIC CABLE	905 & 906 SERIES
-31	Y150	.501		.400		F/O STRAIN RELIEF	801 MULTICHANNEL
-32		.324	.068	.400	.093	SPECIAL	
-34		.263	.100	.400	.120	COMM-SCOPE F59SSV & 71	N
-61		.429	.116	.400	.093	BELDEN 9913	REVERSE POLARITY TNC
-62		.151	.068	.400	.093	SIMILAR TO RG178	REVERSE POLARITY TNC
-63		.429	.116 <sup>.000</sup> <sub>.003</sub>	.400	.120	BELDEN 9913, 9914	N
-572		.300		.400		FOR 95-572-0500X SERIES ANTENNAS	
227-1221-2522	SEE NOTE 5						
227-1221-1122	SEE NOTE 6 (EAR 70853-0)						
227-1221-100		.275	.068	.400	.093	59 QUAD SHEILD & HEADEND	BNC

NOTES:

- DIES TO BE PACKAGED IN PLASTIC CONTAINERS SUPPLIED BY DANIELS MFG CORP. AMPHENOL PART No. MUST APPEAR ON TOP SIDE OF CONTAINER. SIZE: 1-1/4" L x 1-1/4" W x 1-1/4" H.
- MATERIAL: CRIMPING DIES - TOOL STEEL. HEAT TREAT TO ROCKWELL C52-60.
- FINISH: ON CRIMPING SURFACES 32 MICRINCHES MAX. BLACK OXIDE COATING PER MIL-C-13924.
- DIES SHALL BE SUPPLIED WITH APPROPRIATE ROLL PINS.
- SAME AS -25 EXCEPT PACKAGE PER AMPHENOL SPEC 349-50371, SHEET 2, WANG PART No. 723-0350.
- (SAME AS -11) PACKAGE DIE WITH PLASTIC CONTAINER IN UNPRINTED BAG 999-256. BAG SHALL BE STAMPED WITH DATE CODE AND WANG PART No. "723-0391-1022". FOR PACKAGING & SHIPPING PROCEDURE SEE SPEC 349-50371.
- MANUFACTURED BY DANIELS MFG CORP., BLOOMFIELD, MICHIGAN.
- USED IN CONJUNCT WITH AMPHENOL TOOL FRAME PART No. 227-944. (DANIELS MFG CORP. TOOL FRAME HX4).
- DIMENSIONS SHOWN ARE AT FULLY BUTTED CONDITIONS.
- BASIC DIE DIMENSIONS MUST BE PER MIL-C-22520/5C.
- DO NOT SCALE THIS DRAWING.

UNLESS OTHERWISE SPECIFIED, DIMENSIONS ARE IN INCHES AND TOLERANCES ARE: 2 PLACE DECIMAL ±.015 (0,381 mm) 3 PLACE DECIMAL ±.005 (0,127 mm) ANGLES ± 1'	MATERIAL MATERIAL SEE NOTE 2. QQ-B-628, CLASS B FINISH SEE NOTE 3.	DRAWN T. ALBERA DATE 9/20/89	TITLE HEX CRIMP DIE	Amphenol Amphenol Corporation RF/Microwave Operations Danbury, Conn. U.S.A. 06810
	REFERENCE	ENGINEER D. ROYCE DATE 9/29/89		
NOTICE - These drawings, specifications, or other data (1) are, and remain the property of Amphenol Corp. (2) must be returned upon request; and (3) are confidential and not to be disclosed to any person other than those to whom they are given by Amphenol Corp. The furnishing of these drawings, specifications, or other data by Amphenol Corp., or to any other person to anyone for any purpose is not to be regarded by implication or otherwise in any manner licensing, granting rights or permitting such holder or any other person to manufacture, use or sell any product, process or design, patented or otherwise, that may in any way be related to or disclosed by said drawings, specifications, or other data.		APPROVED D. ROYCE DATE 9/29/89	SCALE: 1:1	SHEET OF
		CAD FILE F:\DEPT611\TOOLS\227\1221		CODE ID 74868
			DRAWING NO. 227-1221-X	REV AC